

DWM D6TA1 1-1500-AWM/D (x3) deep freeze package

Specifications

Brand	DWM
Type	D6TA1 1-1500-AWM/D (x3) deep freeze package
Refrigerant	Freon
kW at -20°C/+40°C	70.5
kW at -30°C/+40°C	46.08
kW at -40°C/+40°C	28.71
Unloaded Start	✓
Capacity Control	✓
Pressure safety switches	✓
Hp/Lp/Op	
Control panel	✓
m3 / h	56 in stage 1 and 28 in stage 2 see pdf
Power	15kW
Remarks	R404a - R22 or other freon types
Package / Rack	✓
Stock	1



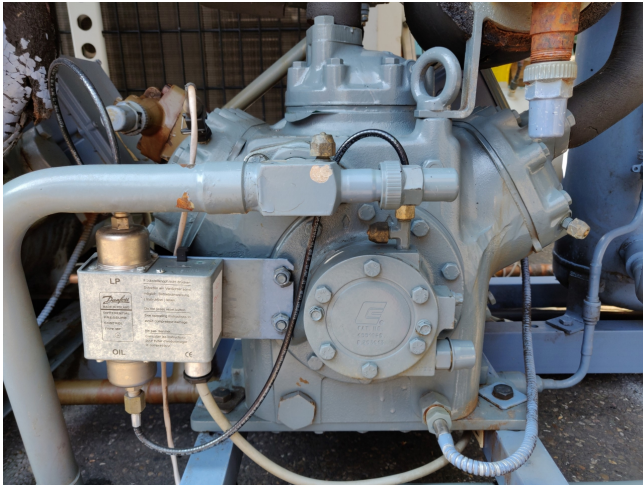
Description

Used DWM D6TA1 1-1500-AWM/D (x3) deep freeze package

Used DWM - Copeland package with 3 pieces D6TA1 1-1500-AWM/D Semi-hermetic piston two stage compressors. *Why choose for HOSBV? Were not only the largest used refrigeration specialist in Europe, but also, we deliver all equipment including an extensive test, warranty and industrial cleaning. *Optional we can also perform a new paint job and arrange the logistics.









Model: D6TA-1500

Capacity

Cooling capacity [kW]

$t_e \setminus t_a$	-50	-45	-40	-35	-30	-25	-20
25	6.49	8.52	11.01	14.02	17.64	21.91	26.93
30	6.18	8.13	10.53	13.42	16.88	20.98	25.79
35	5.87	7.76	10.05	12.81	16.12	20.04	24.65
40	5.57	7.38	9.57	12.21	15.36	19.10	23.50
45	5.29	7.02	9.11	11.61	14.61	18.17	22.35
50	-	6.67	8.65	11.02	13.86	17.23	21.20
55	-	6.34	8.21	10.45	13.12	16.30	20.06

Power input [kW]

$t_e \setminus t_a$	-50	-45	-40	-35	-30	-25	-20
25	5.88	6.53	7.19	7.87	8.53	9.18	9.80
30	6.10	6.80	7.54	8.30	9.07	9.83	10.58
35	6.33	7.08	7.89	8.73	9.60	10.48	11.36
40	6.56	7.37	8.24	9.17	10.13	11.13	12.14
45	6.81	7.66	8.60	9.61	10.68	11.79	12.92
50	-	7.98	8.98	10.07	11.23	12.45	13.72
55	-	8.31	9.38	10.55	11.80	13.13	14.52